

Print Agent for Exchange

Administrator's Guide

document version 1.11

Table of contents

1.	Intro	3
2.	Product Overview	4
3.	Product Architecture and Basic Concepts	5
4.	System Requirements	6
4.1.	Minimum System Requirements	6
4.2.	Supported Types of Messages and Attachments.....	7
4.3.	Supported Versions of the Microsoft Exchange Server	7
5.	Product Installation and Deployment	8
5.1.	Environment Preparation	8
5.2.	Print Agent for Exchange Deployment	8
5.3.	Upgrade from the Previous Version	11
5.4.	Installation of the Agent on an Exchange 2003 failover cluster	11
5.5.	Manual Agent installation.....	11
5.6.	Mail Printing Service manual installation	12
5.7.	Product Uninstall	12
6.	Initial Product Setup	14
6.1.	Creation of Rules	14
6.2.	Priority of Rules.....	14
7.	General Product Settings	17
8.	Licensing	18
9.	Diagnostics of malfunctions	18
10.	FAQ	18
	Conclusion.....	20

1. Intro

This manual has been produced by MAPILab and contains the necessary information for successful installation of Print Agent for Exchange. We ask that you read the entire contents of all the sections of this manual carefully before installing the product.

To avoid most potential problems, please look at the [FAQ](#) on page 21!

The manual contains the following chapters:

- **Chapter 1.** Provides a brief description of product architecture and enables determination of the appropriate type of deployment for your organization.
- **Chapter 2.** Describes system requirements of the product and allows preparing environment for product installation by installing necessary applications and components of the system.
- **Chapter 3.** Contains information you may need during the product installation and help for deploying the product.
- **Chapter 4.** Contains the necessary information for initial configuration of the product.
- **Chapter 5.** This chapter contains descriptions of the product settings to fine tune it to the environment of your organization.
- **Chapter 6.** Describes the principles of product licensing.
- **Chapter 7.** Contains basic information for diagnosis of malfunctions of the product.

2. Product Overview

Print Agent for Exchange is a software product that prints out email messages and attachments automatically, according to the rules set.

Main product features:

Print Agent for Exchange tracks the organization's mail traffic and sends documents (messages, attached files) to a printer in compliance with the rules set.

Print Agent for Exchange operates as a service and doesn't require an open user session.

The product allows use of several printers to perform print tasks in accordance with the rules set.

Print Agent for Exchange is integrated into the transport service of Exchange servers and does not reduce Exchange performance.

The flexible setup wizard of Print Agent for Exchange allows you to select only those servers and workstations for installation of product components which are appropriate.

Print Agent for Exchange is a mass-market solution that doesn't require sophisticated installation or specialists with advanced skills. Product deployment is easy and safe. It takes only a few minutes.

3. Product Architecture and Basic Concepts

The product consists of the three main components:

Print Agent for Exchange Agent. This program component integrates into the Microsoft Exchange Transport Service and keeps track of the organization's mail traffic for compliance with the message processing rules.

Mail Printing Service. This component is a service which generates print tasks from the elements selected by Print Agent for Exchange Agent.

Administrator's console is a Microsoft Management Console 3.0 snap-in. It is designed to manage product deployment, performance control, and the creation of message processing rules.

The product architecture allows you to install it in various configurations. All three program components can be deployed on one server or separately on various workstations.

4. System Requirements

4.1. Minimum System Requirements

Since the Print Agent for Exchange Agent component integrates into the Microsoft Exchange Transport Service, system and hardware requirements for this component are determined by the version of Microsoft Exchange Server used in the environment.

The system requirements for the Administrator's console are determined by Microsoft Management Console 3.0.

The minimum system requirements for the Mail Printing Service component correspond to physical or virtual computers with the following configurations:

- CPU: 600 MHz,
- RAM: 128 MB,
- HDD free space: 100 MB

Operating system:

- Microsoft Windows Server 2003 with SP1 and higher;
- Windows Server 2003 R2;
- Windows Server 2008;
- Windows Server 2008 R2;
- Windows Server 2012;
- Windows Server 2012 R2;
- Windows Server 2016;
- Windows Server 2019;
- Windows XP with SP2 and higher;
- Windows Vista;
- Windows 7;
- Windows 8.

The product may also be deployed on the following systems:

- Windows Small Business Server 2003 with SP1 and higher;
- Windows Small Business Server 2003 R2;
- Windows Small Business Server 2008;
- Windows Essential Business Server 2008.

Both 32- and 64-bit versions of the systems are supported.

The following applications and components of the operating system must be installed before beginning the installation of the Administrator's console:

- **Microsoft .NET Framework v4.5.** Included in the Microsoft Windows Server 2008, Windows Server 2008 R2, Windows Server 2012, Windows Server 2012 R2, Windows Server 2016 and Windows Server 2019.
- **Microsoft Management Console v3.0.** Included in the Microsoft Windows Server 2008, Windows Server 2008 R2, Windows Server 2012, Windows Server 2012 R2, Windows Server 2016 and Windows Server 2019. For other operating systems the component can be downloaded from the [Microsoft knowledge base](#) .
- **Activated DCOM service** (Distributed Component Object Model). This service is activated by default in all versions of Microsoft Windows. The activation and deactivation procedure of this service can be found in [this](#) article.

Installation guide for these components can be found at the Microsoft Web site.

4.2. Supported Types of Messages and Attachments

Print Agent for Exchange supports all types of messages that are supported by your version of the Microsoft Exchange Server. The printable attachments should have one of the following formats: html, htm, txt, pdf, eml, mht, bmp, dib, jpg, jpe, jpeg, jfif, jif, jiff, png, gif, tif, tiff, pic, img, rgb, rgba, pcd, pcx, rle, wmf, emf.

4.3. Supported Versions of the Microsoft Exchange Server

Print Agent for Exchange is completely operable on the following versions of the Microsoft Exchange Server:

- Microsoft Exchange Server 2003;
- Microsoft Exchange Server 2007;
- Microsoft Exchange Server 2010;
- Microsoft Exchange Server 2013;
- Microsoft Exchange Server 2016;
- Microsoft Exchange Server 2019.

5. Product Installation and Deployment

To install the product you will need local administration privileges on the installation computer. Run the PrintAgent.exe and follow the Wizard's instructions. Please note that the installation file should be run only on those computers where the Administrator's console component is required. Other components of the product will be installed remotely on the servers specified during the deployment process.

5.1. Environment Preparation

For successful software operation, you need to prepare a user profile which the Mail Printing Service will be running as.

1. Create a domain user that will be the local administrator of the computer where the Mail Printing Service will be deployed.
2. Login to the system using this account on the computer intended for deployment of the Mail Printing Service.
3. Install and set up one or several printers (local or network) you plan to use for message printing. Note that these printers should be published in the Active Directory.

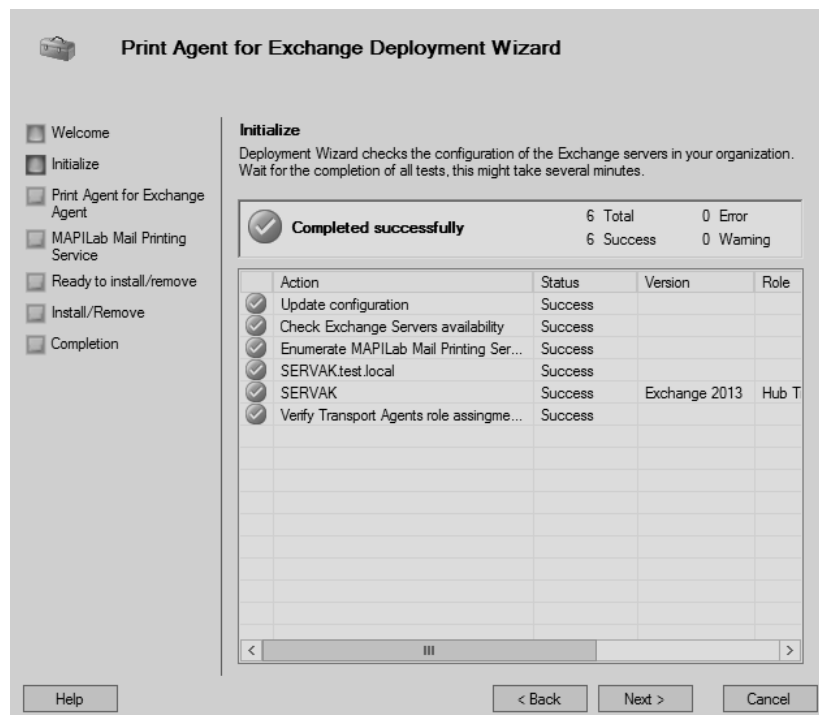
5.2. Print Agent for Exchange Deployment

To deploy the product, the user, who runs Print Agent for Exchange console, should have the domain/enterprise administrator rights or Exchange Organization Administrator role (for Microsoft Exchange 2007, 2010, 2013, 2016 and 2019) and be a local administrator for computers the product components will be installed on.

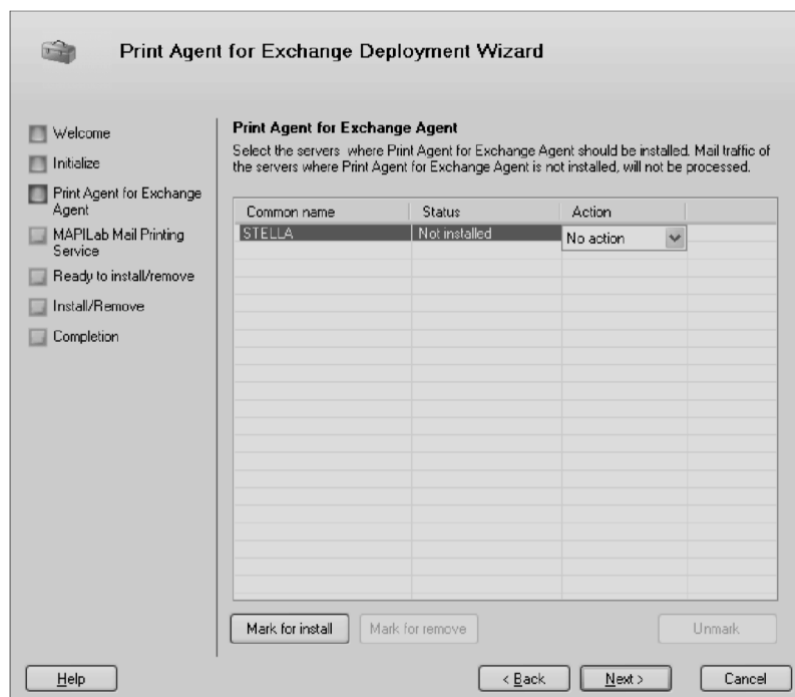
Upon the product installation, please launch the Print Agent for Exchange console. Select „Print Agent for Exchange“ in the console tree and press „Deployment“ in the context menu or in the Actions pane.

The Deployment Wizard will be started to help you set up the Product in your organization's environment.

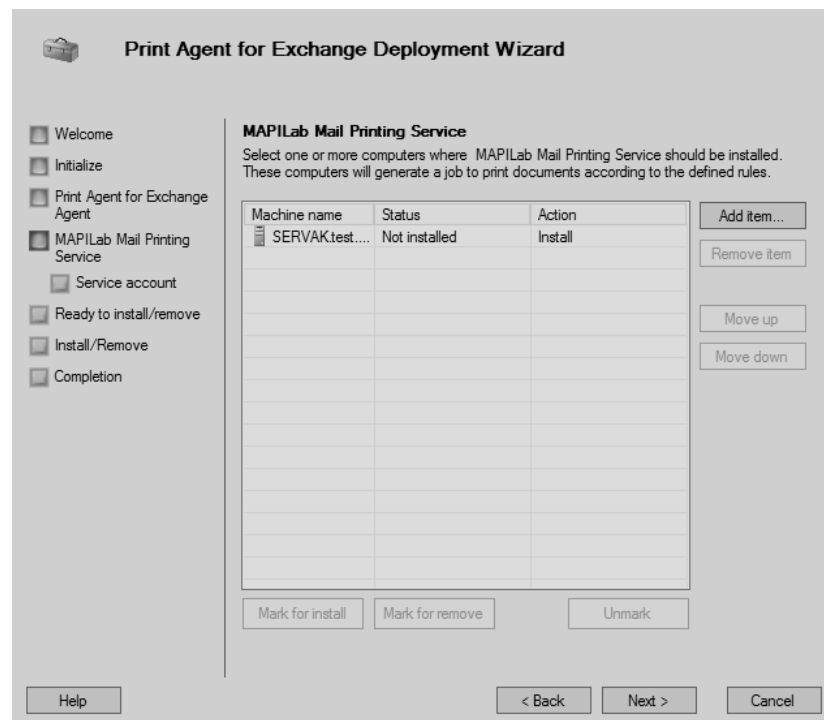
In Step 2, the Deployment Wizard will search the Exchange servers and check for the possibility of installing Print Agent for Exchange Agent on them. This agent is installed on the Backend or Hub Transport servers only; other servers will not be shown in the list!



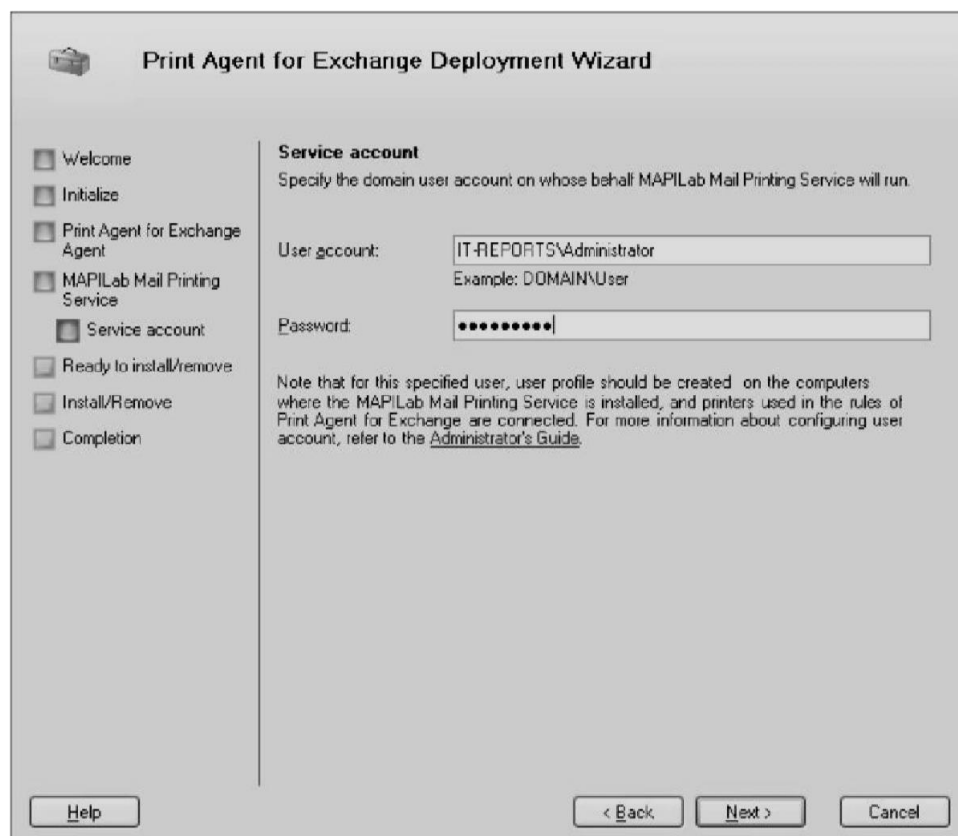
In **Step 3** of the Deployment Wizard, you will be prompted to select the servers where Print Agent for Exchange Agent should be deployed. Note: in some cases, remote installation of the agent may not be possible. For example, in the case of blocking by a firewall. In this case, you can install the agent manually (see point #4.4).



In **Step 4** of the Deployment Wizard, you will be prompted to select computers on which the Mail Printing Service (that generates the print tasks) will be installed. Add to the list those computers where the user profile was created and configured in accordance with Chapter #4. In this step you may delete any previously installed copies of the Mail Printing Service or reinstall them.



In the next step, enter the credentials of the user created in accordance with Chapter „Environment Preparation“ of this Guide.



In the next step, check the deployment parameters of Print Agent for Exchange, press „Next“ and wait for the completion of installation. Now the deployment of Print Agent for Exchange is completed. You may change the parameters of the Print Agent components by launching the Deployment Wizard.

5.3. Upgrade from the Previous Version

When upgrading from the previous version of the product, it is necessary to read the installation instructions received with the given update. Generally, you will need to launch the product's installation program on all computers where the Administrator's console is installed and wait for the component upgrades. After that, the Deployment Wizard should be started. Select „Reinstall“ for all servers where Print Agent for Exchange Agent and Mail Printing Service are installed. **All previously created rules and settings will be saved.**

5.4. Installation of the Agent on an Exchange 2003 failover cluster

The Product supports installation of the Agent on the failover cluster of Exchange 2003 servers. Installation of the Agent on the failover cluster is performed with the help of the Deployment Wizard. The Agent will be installed on the active cluster node only. To install the Agent on other nodes, stop the Cluster Service on the active node. This way, you will activate another node, where the Agent has not been installed yet. Then perform deployment with the help of Deployment Wizard again.

5.5. Manual Agent installation

If you deploy the product using the deployment wizard, you do not need to use the manual installation of the agent. This mode is used only in case of automatically installation fail.

To install agent manually, copy the file AgentSetup.msi from the archive “%ProgramFiles(x86)%\MAPILab Ltd\Print Agent for Exchange\DeploymentPackage.zip” on the Transport server and run this cmdlet in the command prompt:

```
“AgentSetup.msi /Log agentSetup.log MANUALINSTALL=1 SERVICETIMEOUT=15”
```

where:

“agentSetup.log” - path to the installation log,

SERVICETIMEOUT – delay of transport service restart (optional, default 4 min).

5.6. Mail Printing Service manual installation

Manual Mode installation of Mail Printing Service may be used **only for purposes of fault diagnosis**. If you deploy the product successfully using the deployment wizard, you do not need to use the manual installation of the agent.

To install the agent manually, copy the file MailPrintingServiceSetup.msi from the archive

```
"%Program Files(x86)%\MAPI Lab Ltd\Printing Tool for Exchange\MailPrintingServiceSetup.zip"
```

on the computer that generates the print tasks and run the command in command line:

```
"msiexec /i MailPrintingServiceSetup.msi SERVICEUSER=user SERVICEPASSWORD=password /L ServiceSetup.log",
```

where "ServiceSetup.log.log" is the path to the installation log.

After completing Mail Printing Service manual installation, you will need to look through the Installer Log File, troubleshoot, and find out the cause of the failure of the installation of the Service using the Deployment Wizard.

Please note: after troubleshooting, you will need to run installation of Mail Printing Service by using Deployment Wizard.

5.7. Product Uninstall

Since the Product components may be installed on various computers, the product can be uninstalled in two ways:

1. Removing of Print Agent for Exchange Agent and Mail Printing Service components are performed through the Deployment Wizard. After that, the remaining components of the product can be removed by through the Add or Remove Programs (Programs and Features) applet.
2. All components can be removed through the standard „Add or Remove Programs“ (Programs and Features) applet of the Control Panel separately on those computers where such components were installed.

After the product's removal, some components will remain:

- Active Directory container "CN=MAPILabPrintAgent,CN=Global Settings,CN=[your Exchange organization name],CN=Microsoft Exchange,CN=Services,CN=Configuration,DC=[your domain name]";
- Log files of the Print Agent for Exchange Agent in the "%Program Files (x86)%\MAPILab Ltd\Print Agent for Exchange Agent\Log" folder on the Exchange server;
- Log files of the Mail Printing Service in the "%Program Files (x86)%\MAPILab Ltd\MAPILab Mail Printing Service\Log" folder on a computer where Mail Printing Service were installed;
- Log files of the Administrator's console in the "%Program Files (x86)%\MAPILab Ltd\Print Agent for Exchange\" folder on a computer where Administrator's console were installed;

Saving these files allows updating the product with saving all of the settings through removal and further installation of a new version in the same folder. Remove these items manually if you don't want to keep the settings.

6. Initial Product Setup

After completion of the deployment as described in chapter 4 of this guide, message processing rules should be created. For this, select "New Rule..." in the "Rules" area in the Administrative Console. After that, the Rule Wizard will be started to help you to create message processing conditions.

6.1. Creation of Rules

Please note that the rules can be created only by those users who have domain/enterprise administrator privileges or belong to the Exchange Organization Administrator role (for Microsoft Exchange 2007, 2010, 2013, 2016 and 2019).

This permission limitation comes about because the product's configuration is stored in the AD container "CN= MAPILabPrintAgent,CN=Global Settings,CN=[your Exchange organization name],CN=Microsoft Exchange,CN=Services,CN=Configuration,DC=[your domain name]" during deployment. Message processing rules are also saved in this container, for which read and write permissions are assigned by default to members of "Domain Admins", "Enterprise Admins" and "Exchange Organization Administrators" groups only (if Microsoft Exchange Server 2007, 2010, 2013, 2016 or 2019 is installed in the organization). If users without such rights need to be granted rule creation rights, you must manually grant the "Read, Write, Create All Child Objects" and "Delete All Child Objects" permissions for these users. This can be done by means of various editors of Active Directory such as ADSI Edit.

Please note that only printers set up in accordance with Chapter 5, *Environment Preparation*, of this Guide may be used in the rules for print messages and attachments.

6.2. Priority of Rules

Print Agent for Exchange enables adjustment in the priority of created rules. Rule priority is determined in the process of rule creation and specified in the Priority column of the Administrator's console. The a lower number indicates a higher priority. The rule priority can always be changed by moving the rule up or down in the list with the help of the Move up and the Move down buttons in the context menu or in the Actions pane.

Please note that in case of installation of other agents from the MAPILab Disclaimers for Exchange or Attachment Save for Exchange on the same transport server, the rules of different agents may be applied to the same message. The order of

application will be defined by the time of the agent installation. For example, if the Print Agent for Exchange Agent is installed first and then the MAPI Lab Disclaimers for Exchange Agent from the *MAPI Lab Disclaimers for Exchange* product is installed, the rules for Print Agent for Exchange will be applied first as the priority of this agent will be higher. This order of execution may be particularly useful to reduce the volume of graphics sent for printing by means of Print Agent for Exchange. At the same time, this situation could have a negative effect when the rules of Print Agent for Exchange are applied prior to the spam filter (if such filter is installed on the same transport server as Print Agent for Exchange Agent) which may lead to printing of unnecessary messages. The order of agents can be established in the following manner:

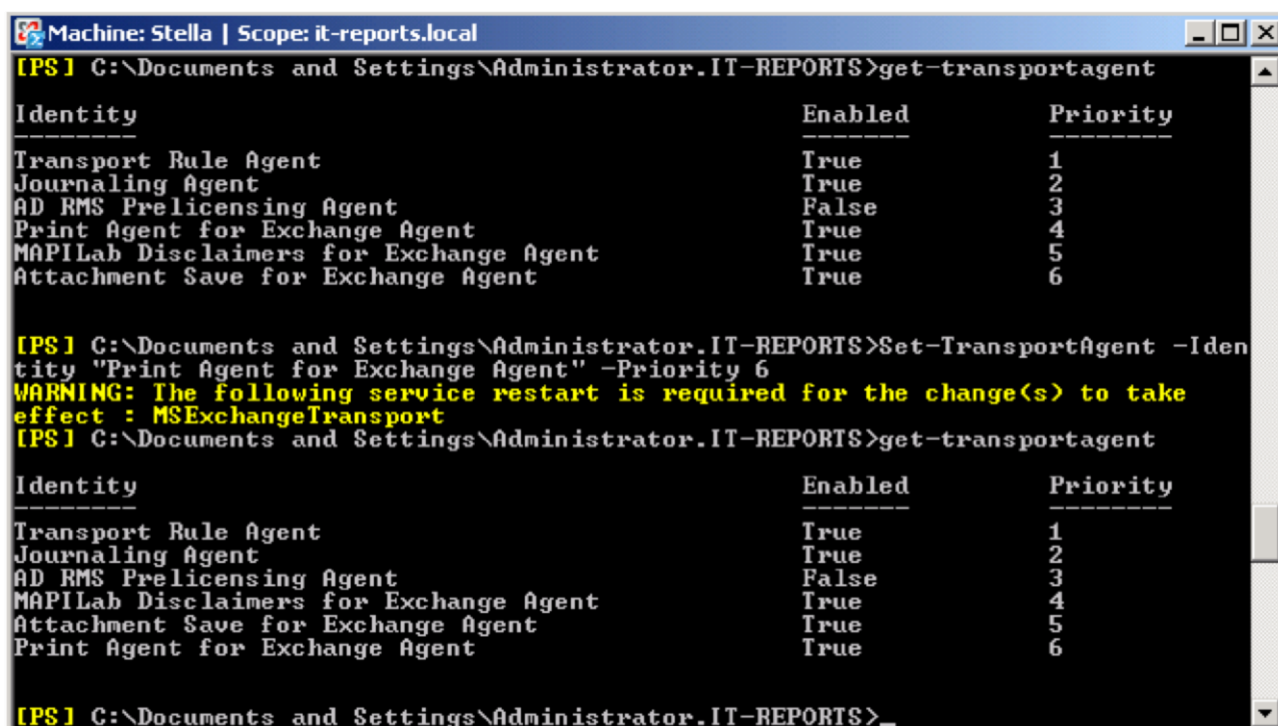
In Microsoft Exchange Server 2007, 2010, 2013, 2016 or 2019

Run Exchange Management Shell on the transport server and execute the command "Get-TransportAgent". The list of installed agents will be displayed in the execution results (see figure).

The priority of agents can be changed with the command:

```
"Set-TransportAgent -Identity "Print Agent for Exchange Agent" -Priority 4"
```

where "Print Agent for Exchange Agent" is the agent name, "4" – priority. The "1" has the highest priority. After changing the priority of agents, the transport service needs to be restarted, e.g. with the "Restart-Service MExchangeTransport" command.



```
Machine: Stella | Scope: it-reports.local
[PS] C:\Documents and Settings\Administrator.IT-REPORTS>get-transportagent
Identity                                     Enabled      Priority
-----
Transport Rule Agent                       True         1
Journaling Agent                          True         2
AD RMS Prelicensing Agent                 False        3
Print Agent for Exchange Agent            True         4
MAPI Lab Disclaimers for Exchange Agent   True         5
Attachment Save for Exchange Agent        True         6

[PS] C:\Documents and Settings\Administrator.IT-REPORTS>Set-TransportAgent -Identity "Print Agent for Exchange Agent" -Priority 6
WARNING: The following service restart is required for the change(s) to take effect : MExchangeTransport
[PS] C:\Documents and Settings\Administrator.IT-REPORTS>get-transportagent
Identity                                     Enabled      Priority
-----
Transport Rule Agent                       True         1
Journaling Agent                          True         2
AD RMS Prelicensing Agent                 False        3
MAPI Lab Disclaimers for Exchange Agent   True         4
Attachment Save for Exchange Agent        True         5
Print Agent for Exchange Agent            True         6

[PS] C:\Documents and Settings\Administrator.IT-REPORTS>
```

In Microsoft Exchange Server 2003

To change the priority of agents (sinks) in Microsoft Exchange Server 2003, you need to download the script SMTPReg.Vbs

<http://msdn.microsoft.com/enus/library/ms528023%28EXCHG.10%29.aspx> .

Copy the script to the transport server, open a command prompt and run:

```
cscript "C:\SMTPReg.vbs" /enum > "C:\sinks.txt"
```

where:

"C:\SMTPReg.vbs" – name of script file;

"C:\sinks.txt" - name of output file which will displays information about available sinks.

Open the file sink.txt and find the agent that you need.

```
-----  
| Binding |  
-----  
      Event: SMTP Transport OnPostCategorize  
        ID: {D0D4DE8E-5FAA-4442-96DB-63D8909AC118}  
        Name: MAPILab Disclaimers for Exchange Agent  
      SinkClass: MAPILab.ExchangeUtils.DisclaimerTool.SmtpSink.SmtpSink  
      Enabled: True  
SourceProperties: {  
                  priority = 400  
                  }  
SinkProperties   {  
                  VSI = 1|  
                  }  
-----
```

To change the priority of the agent, a command such as the following can be used:

```
cscript "C:\SMTPReg.vbs" /setprop 1 OnPostCategorize "MAPILab Disclaimers for Exchange Agent" Source Priority 500
```

where:

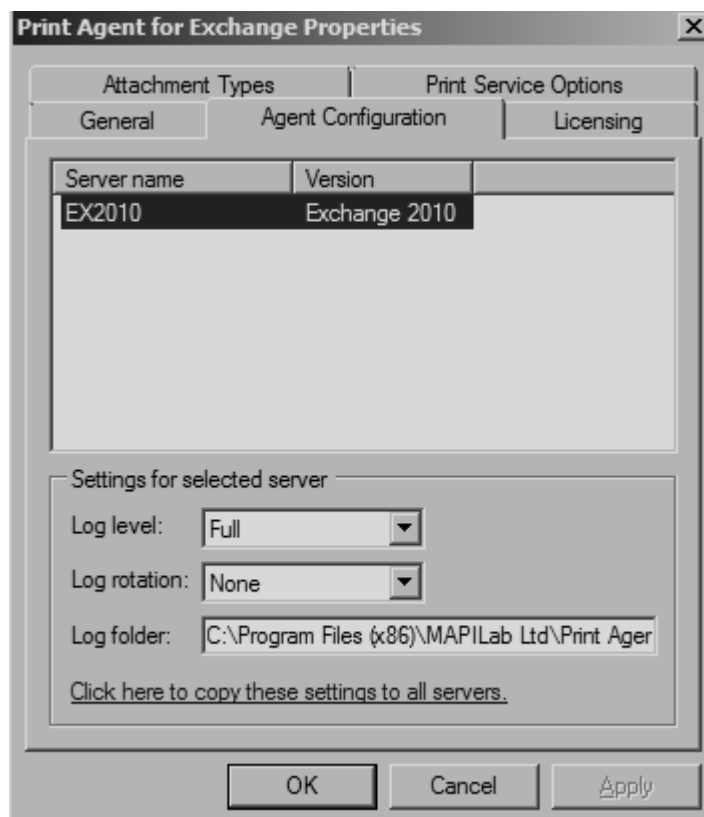
1 – number of virtual SMTP server (if you have several virtual servers, the agent will be installed on each of them);

"MAPILab Disclaimers for Exchange Agent" – name of the agent (sink);

500 – priority to be given (the value can range from 0 to 32767, with 0 being the highest priority and 32767 the lowest priority.)

7. General Product Settings

The product settings are adjusted in the Properties dialog that is opened from the Actions pane or context menu in the Administrator's Console.



The product log file settings are configured in the Agent Configuration tab. These settings are made separately for each server the Print Agent for Exchange Agent is installed on:

Log level – level of record details in the log. The default setting – Errors – enables recording only of message processing errors. Change this setting to Full if the maximum amount of message processing information needs to be saved in the log (can be used for error diagnostics), or None, if the log is not required.

Log folder – folder to save Print Agent for Exchange Agent logs. Default setting: “%Program Files (x86)%\MAPILab Ltd\Print Agent for Exchange Agent\Logs\”

Product licensing keys are explained in the Licensing tab. More details in [chapter 7](#).

Monitoring. Agent performance is displayed in this Section. Here you may view information about the number of messages processed by agent and processing time in the form of diagrams.

Section "Rules". Message processing rules can be viewed, edited and created in this Section. When creating a new rule or editing an existing one, the Rule Setting Wizard is started to help you create or edit the message processing rule.

8. Licensing

Licensing the product is made by purchase of license keys for the appropriate amount of Exchange servers on which product Agent is installed. These license keys are entered on the Licensing tab in the Properties dialog that is opened from the Actions pane or context menu in the Administrator's Console. Please note that after the trial period expires, the Agent will stop the processing messages until you enter the license keys.

9. Diagnostics of malfunctions

After completing the product deployment and creating the initial message processing rules, it is recommended to check it. For this purpose, send a text message that complies with the rules set.

10. FAQ

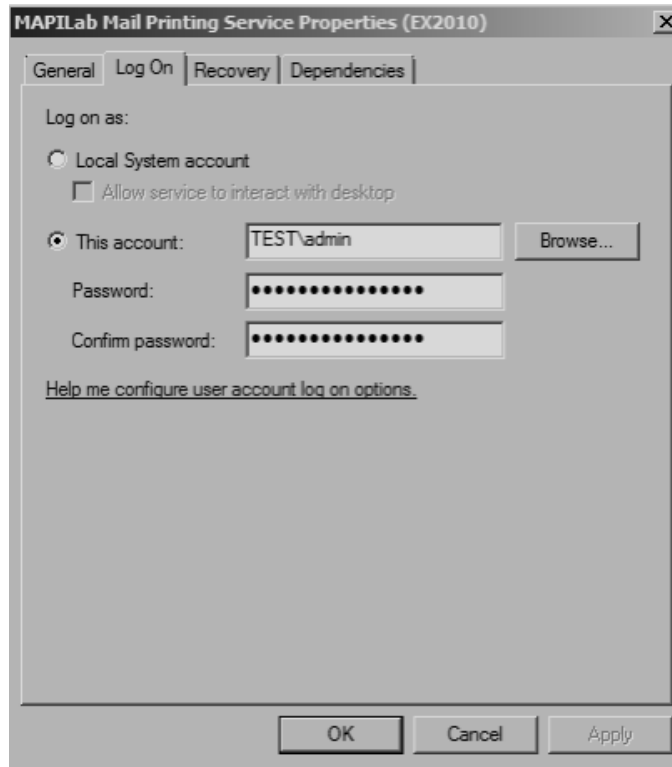
Q: The MAPILab Print Agent doesn't print. What should I do?

A: First of all, restart Mapilab Mail Printing service. In most cases the problem is in incorrect operation of the service.

If the problem persists, please send us a "service.log" file from the workstation with Mapilab Mail Printing service installed, the path is:

<system drive>:\Program Files (x86)\MAPILab Ltd\MAPILab Mail Printing Service\Log

Please send the log in the computer where Mapilab Mail Printing service is deployed, from an account which runs this service like:



Make sure this account can print documents manually from the system.

Q: Why doesn't the Mapilab Print Agent print office documents (*.doc, *.docx, etc.)?

A: Please install an appropriate version of OpenOffice software:

PrintAgent v1.6.1552 and newer supports 3.x and 4.x versions of Open Office.

PrintAgent v1.5.1372 to v1.6.1552 supports 4.x versions of Open Office only.

PrintAgent older than v1.5.1372 supports 3.x versions of Open Office only.

Q: Why doesn't the Mapilab Print Agent print my PDFs?

A: The PDF format does not have a consistent structure. Each document can be an individual case. So just send us a sample of the PDF file and the "service.log" file from the workstation with Mapilab Mail Printing service installed. The specified path is:

<system drive>:\Program Files (x86)\MAPILab Ltd\MAPILab Mail Printing Service\Log

Conclusion

More details about the Product and its features as well as the latest updates can be found on the MAPILab Web site <http://www.mapilab.com>.